

ACCORDS Learning Health Systems: Models & Methods for Embedded Research 2021-2022 Seminar Series

- About the Adult and Child Consortium for Health Outcomes Research and Delivery Science (ACCORDS) at CU Anschutz Medical Campus:
 - Health services, outcomes, and implementation research
 - Methodological cores and programs focused on service including consultation, training, and grant development
- Today: **Learning Health Systems 2021: Where We've Been and Where We Need To Go**
 - *Presented by:* Katy Trinkley, PharmD, PhD and Heather Gilmartin, PhD, NP

ACCORDS Upcoming Events

Workshops and Seminars for 2021-2022:

Sep 22 12:00-1:00 PM MT	▪ CCTSI/ACCORDS Community Engagement Forum
Oct 11 12:00-1:00 PM MT	▪ Learning Health Systems Seminar Series 2021- 2022 <ul style="list-style-type: none">▪ Marc Williams, MD from Geisinger
Nov 11, 12, 17, & 19 8:30-1:00PM MT	▪ Qualitative and Mixed Methods Research Workshop
May 23, 24, & 25 8:30-1:00PM MT	▪ COPRH Con 2022

Previously recorded seminars can be found on our [ACCORDS Education website](#)

Learning Health Systems in 2021: Where We've Been & Where We Need To Go

Katy Trinkley, PharmD, PhD

Heather Gilmartin, PhD, NP

ACCORDS 2021-2022 Seminar Series

September 13, 2021

Learning Objectives



Describe the facts and fiction regarding learning health systems



Explain the historical context and aspirational goals of learning health systems



Illustrate persistent implementation challenges of learning health systems



Discuss a framework to achieve the aspirational goals of a fully mature learning health system

There is one definition for a
Learning Health System

Fact or Fiction

FACT



Learning
Healthcare
System

A system in which,

“science, informatics, incentives, and culture are aligned for continuous improvement and innovation, with best practices seamlessly embedded in the delivery process and new knowledge captured as an integral by-product of the delivery experience”.

IOM 2015



For Grants and Papers

A learning health system, per the
Institute of Medicine...

“harnesses data and analytics to
learn from every patient and feed
the knowledge to clinicians to
implement with high-reliability (i.e.,
error free)”

Learning Health Systems are a
new idea

Fact or Fiction

FICTION

Lean & Six Sigma

Team Science

Systems Science

Pragmatic Trials/Mixed-Methods

Community-based Participatory Research

Continuous Quality Improvement

Decision Support

Informatics

Dissemination & Implementation Science

Behavior Change

Value-based Care

Improvement Science



IOM ROUNDTABLE ON EVIDENCE-BASED MEDICINE

THE LEARNING HEALTHCARE SYSTEM

Workshop Summary



INSTITUTE OF MEDICINE
OF THE NATIONAL ACADEMIES

THE LEARNING HEALTH SYSTEM SERIES

ROUNDTABLE ON VALUE & SCIENCE-DRIVEN HEALTH CARE

DIGITAL INFRASTRUCTURE FOR THE LEARNING HEALTH SYSTEM
The Foundation for Continuous Improvement in Health and Health Care
Workshop Series Summary



INSTITUTE OF MEDICINE
OF THE NATIONAL ACADEMIES

THE LEARNING HEALTH SYSTEM SERIES

ROUNDTABLE ON VALUE & SCIENCE-DRIVEN HEALTH CARE

DIGITAL DATA IMPROVEMENT PRIORITIES FOR CONTINUOUS LEARNING IN HEALTH AND HEALTH CARE
Workshop Summary



INSTITUTE OF MEDICINE
OF THE NATIONAL ACADEMIES

THE LEARNING HEALTH SYSTEM SERIES

ROUNDTABLE ON VALUE & SCIENCE-DRIVEN HEALTH CARE

OBSERVATIONAL STUDIES IN A LEARNING HEALTH SYSTEM
Workshop Summary



INSTITUTE OF MEDICINE
OF THE NATIONAL ACADEMIES

THE LEARNING HEALTH SYSTEM SERIES

ROUNDTABLE ON VALUE & SCIENCE-DRIVEN HEALTH CARE

and FORUM ON DRUG DISCOVERY, DEVELOPMENT, AND TRANSLATION

LARGE SIMPLE TRIALS AND KNOWLEDGE GENERATION IN A LEARNING HEALTH SYSTEM
Workshop Summary



INSTITUTE OF MEDICINE
OF THE NATIONAL ACADEMIES

THE LEARNING HEALTH SYSTEM SERIES

ROUNDTABLE ON VALUE & SCIENCE-DRIVEN HEALTH CARE

PATIENTS CHARTING THE COURSE
Citizen Engagement and the Learning Health System
Workshop Summary



INSTITUTE OF MEDICINE
OF THE NATIONAL ACADEMIES

Learning Health Systems
researchers are a real thing

Fact or Fiction

FACT

Learning Health Systems Researcher

“An individual who is **embedded** within a health system and **collaborates** with its stakeholders to produce novel insights and evidence that can be **rapidly implemented** to improve the outcomes of individuals and populations and health systems performance.”


Agency for Health Research and Quality, 2017

There are model
Learning Health Systems

Fact or Fiction

FACT

Accelerating implementation of research in Learning Health Systems: Lessons learned from VA Health Services Research and NCATS Clinical Science Translation Award programs

Amy M. Kilbourne^{1,2} , Patricia L. Jones³ and David Atkins¹

¹Health Services Research and Development, Veterans Health Administration, U.S. Department of Veterans Affairs, Washington, DC, USA; ²Department of Learning Health Sciences, University of Michigan Medical School, Ann Arbor, MI, USA and ³Division of Clinical Innovation, National Center for Advancing Translational Sciences, National Institutes of Health, Bethesda, MD, USA

Quality Enhancement Research Initiative Implementation Roadmap *Toward Sustainability of Evidence-based Practices in a Learning Health System*

Amy M. Kilbourne, PhD, MPH,*† David E. Goodrich, EdD,‡ Isomi Miake-Lye, PhD,§
Melissa Z. Braganza, MPH,* and Nicholas W. Bowersox, PhD, ABPP‡

Moving From Discovery to System-Wide Change: The Role of Research in a Learning Health Care System: Experience from Three Decades of Health Systems Research in the Veterans Health Administration*

David Atkins,¹ Amy M. Kilbourne,^{1,2}
and David Shulkin¹

Accelerating learning healthcare system development through embedded research: Career trajectories, training needs, and strategies for managing and supporting embedded researchers*

Elizabeth M. Yano, PhD, MSPH^{a,b,c,*}, Adam Resnick, MPH^{a,b}, Michael Gluck, PhD^d,
Harry Kwon, PhD, MPH, MCHES^e, Kamila B. Mistry, PhD, MPH^e

^a VA HSR&D Center for the Study of Healthcare Innovation, Implementation and Policy, VA Greater Los Angeles Healthcare System, 16111 Plummer Street, Sepulveda, CA 91343 USA

^b Department of Health Policy and Management, UCLA Fielding School of Public Health, Los Angeles, CA, 90095, USA

^c Department of Medicine, UCLA Geffen School of Medicine, Los Angeles, CA, 90095, USA

^d AcademyHealth, 1666 K Street NW, Suite 1100, Washington, DC, 20006, USA

^e Agency for Healthcare Research and Quality, 5600 Fishers Lane, Rockville, MD, 20857, USA



There is one standard model for
Learning Health Systems

Fact or Fiction

FICTION

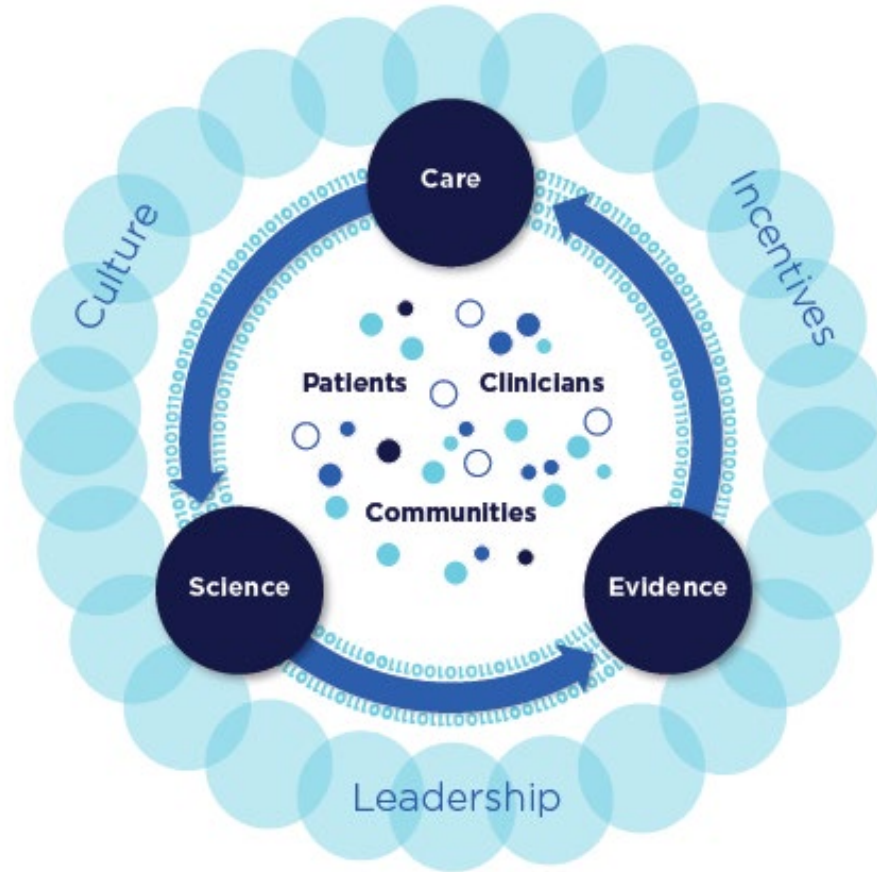
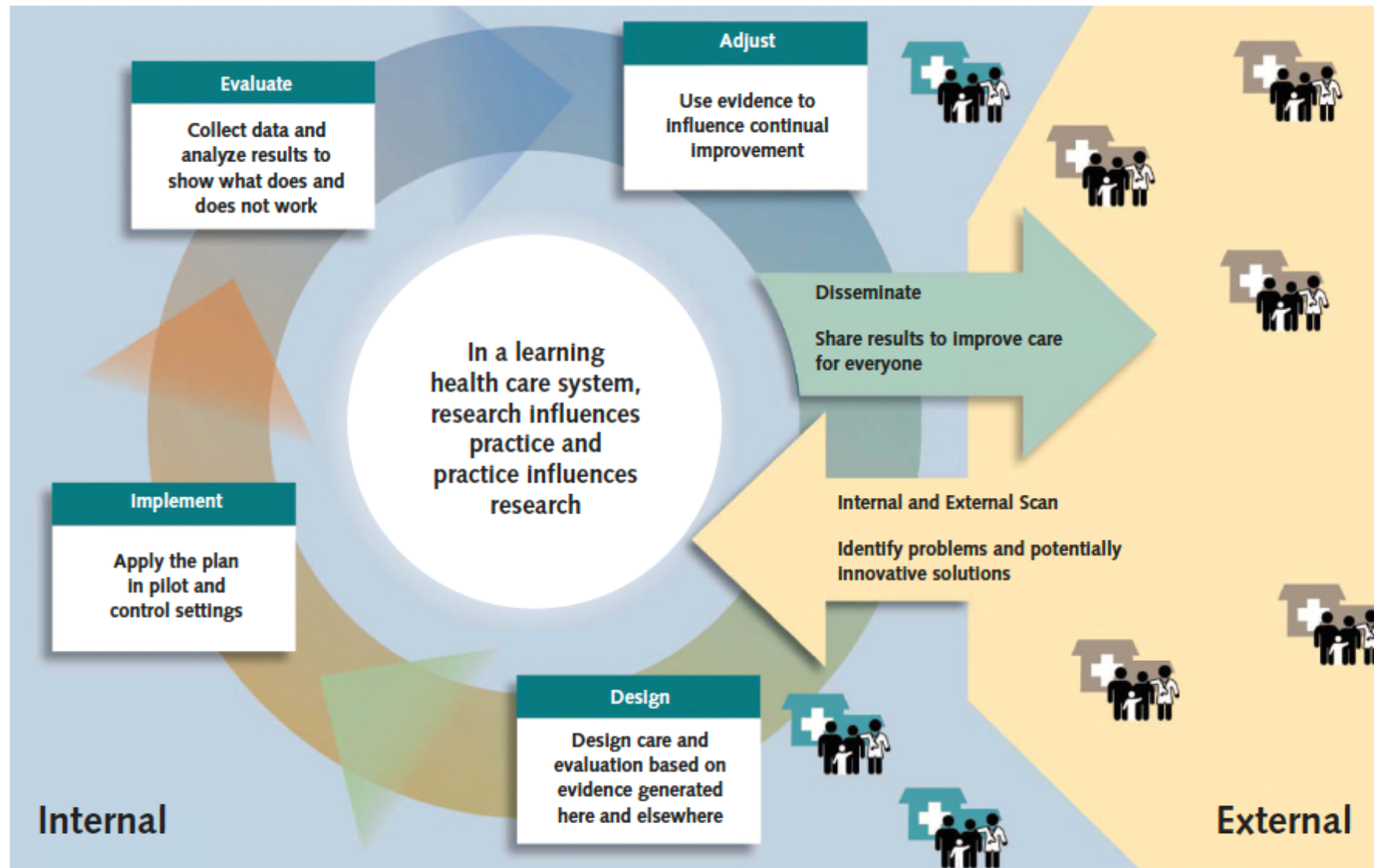
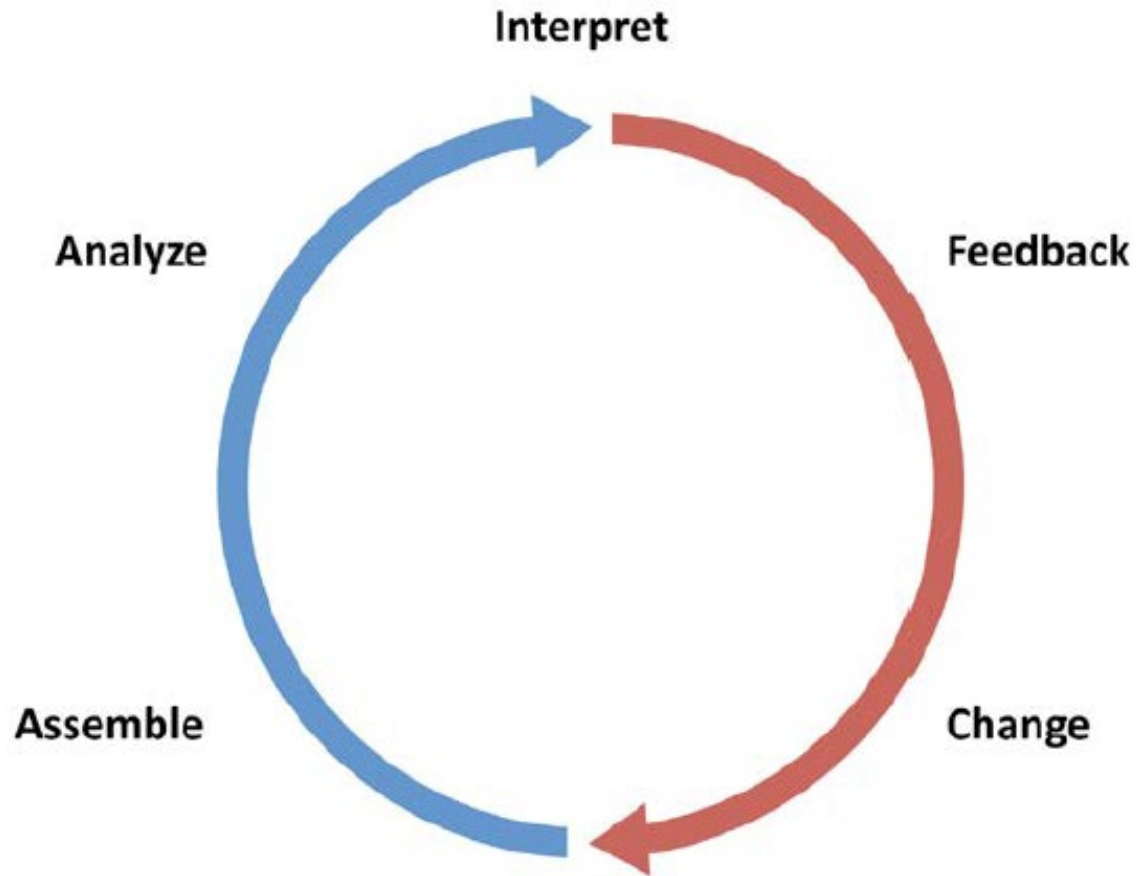


FIGURE S-3 Schematic of the continuously learning health care system.

Figure. The 6 phases of the rapid-learning health care system, from scanning to dissemination.



Learning Health System Model of Change



Blue Side: Technical advances

Red Side: Interdisciplinary – behavioral psychology, communication science, implementation science, behavioral economics, policy science, organizational theory.

Figure 2. The Learning Health System Cycle. Reproduced from [43]

Learning Health Systems

“Practice generating research”

Research informs practice ↔ Practice informs research

- It's hard
 - Complex, dynamic systems

Where We've Been: Well-Known Challenges

- System- and policy level support
 - Financial support, training programs
- Resource availability
 - Methodologic and analytic expertise
 - Accessibility of actionable and inclusive data
- Engagement of stakeholders
 - Patients, community members
- Shared mission across research and clinical enterprises

Many Existing LHS

- Diverse models
 - **Centralized** governance within a health system



- **Consultancy-like**



School of Medicine
& Health Sciences


- **Decentralized** data network



Spectrum of LHS Maturity

- It's NOT all or nothing

A maturity grid assessment tool for learning networks

Carole Lannon^{1,2,3} | Christine L. Schuler^{3,4} | Michael Seid^{1,3,5}  |
Lloyd P. Provost⁶ | Sandra Fuller¹ | David Purcell¹ | Christopher B. Forrest⁷
Peter A. Margolis^{1,3}

Where We Need to Go

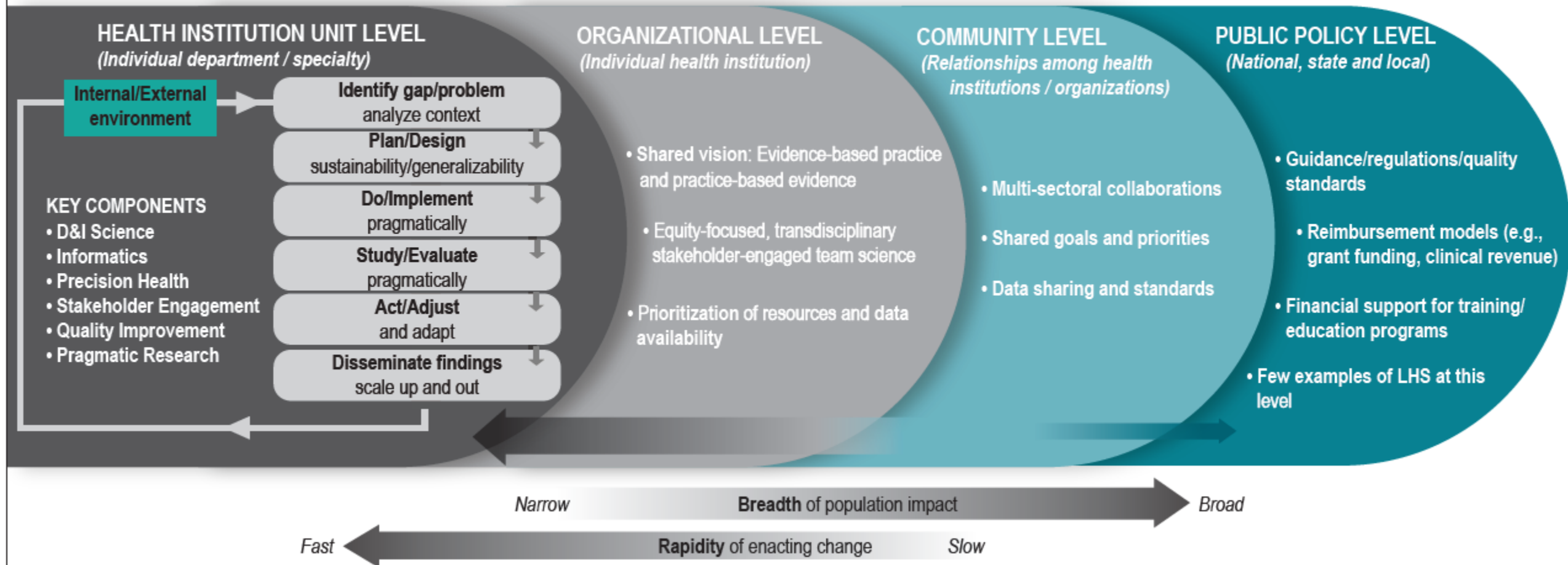
A Fully Mature Learning Health System

- Aspirational
 - Innovations in data, technology and best practices
- Commitment to excellence
 - Quality, value, efficiency, equity



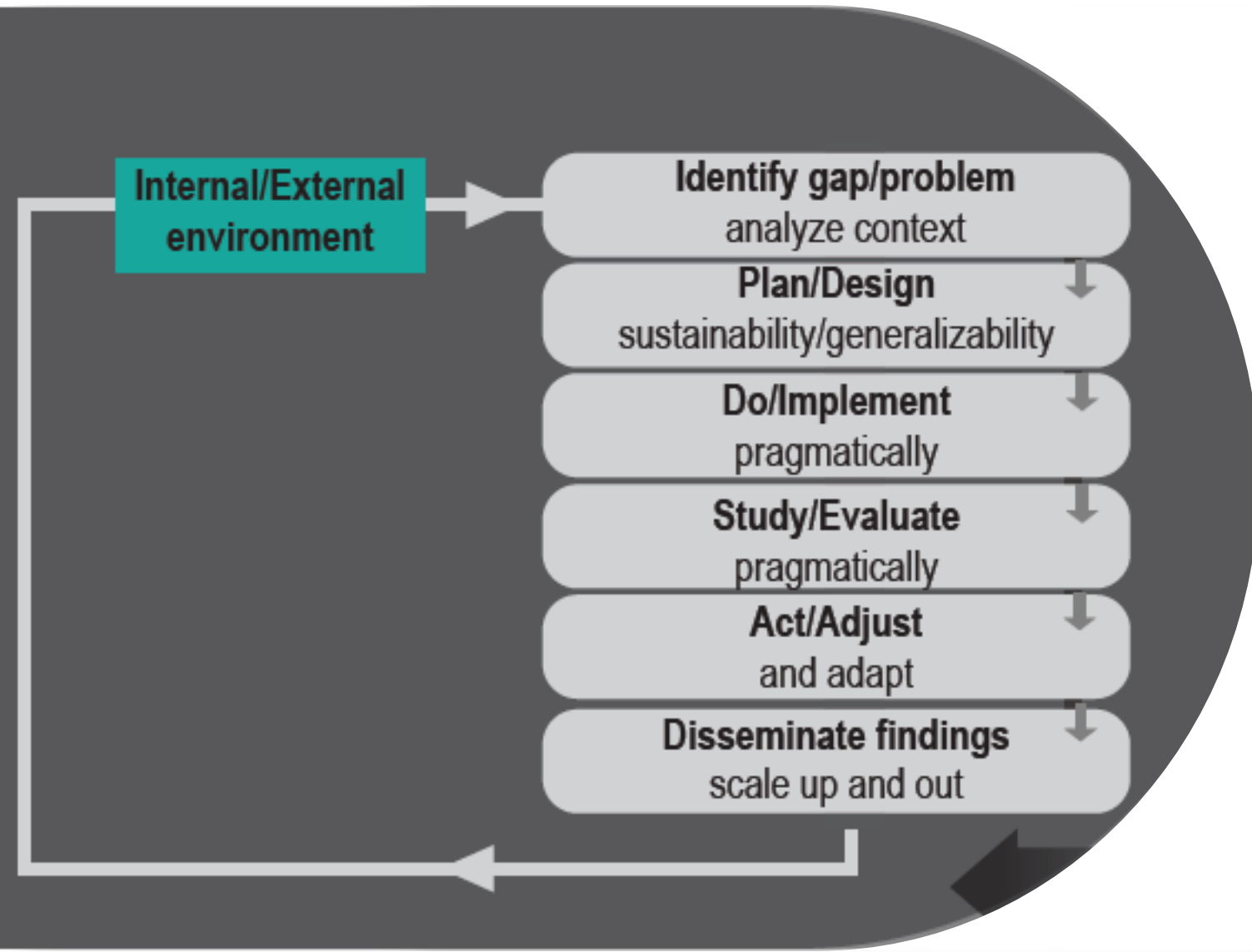
An Aspirational Framework for a Mature LHS

Systems Thinking Approach to Complex Problems



Collaborators: Amy Huebschmann, Russ Glasgow, Mike Ho

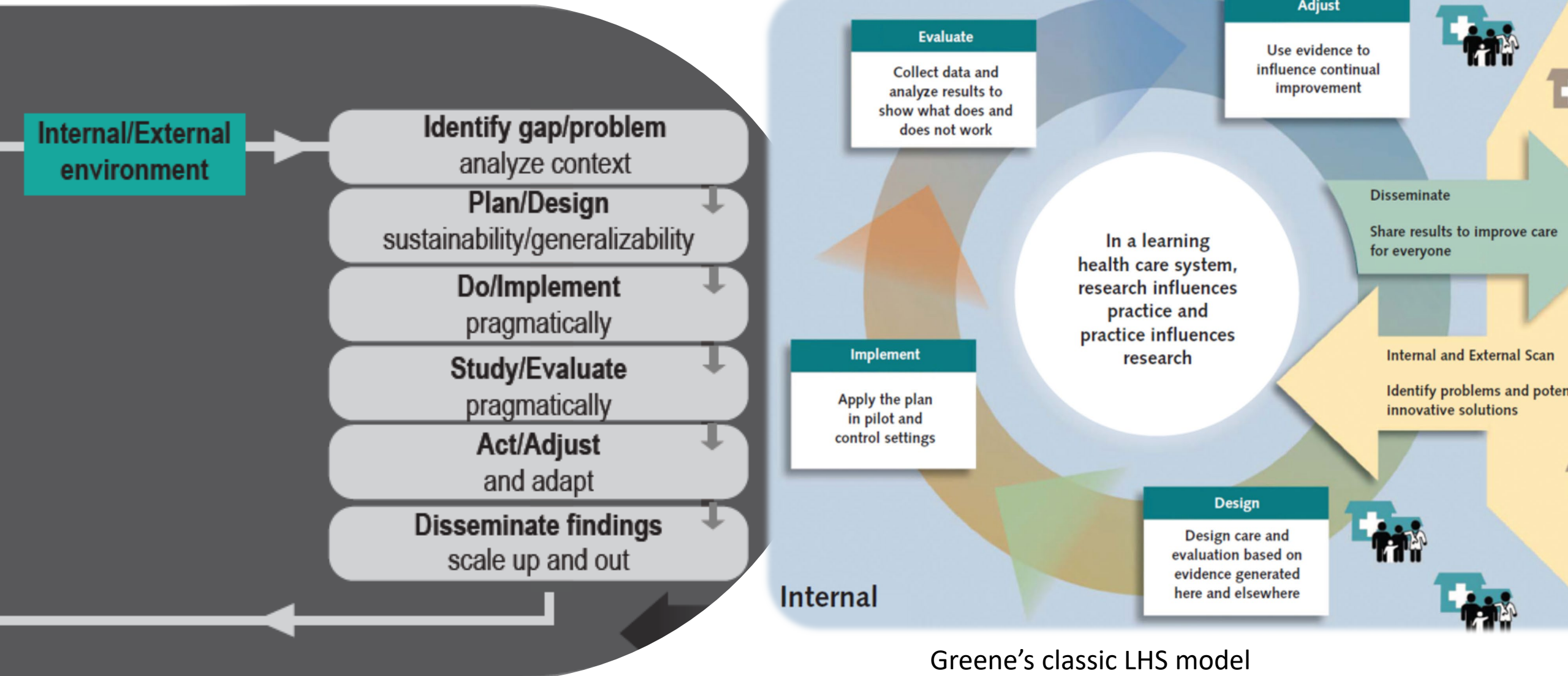
An Aspirational Framework for a Mature LHS



Learning cycles

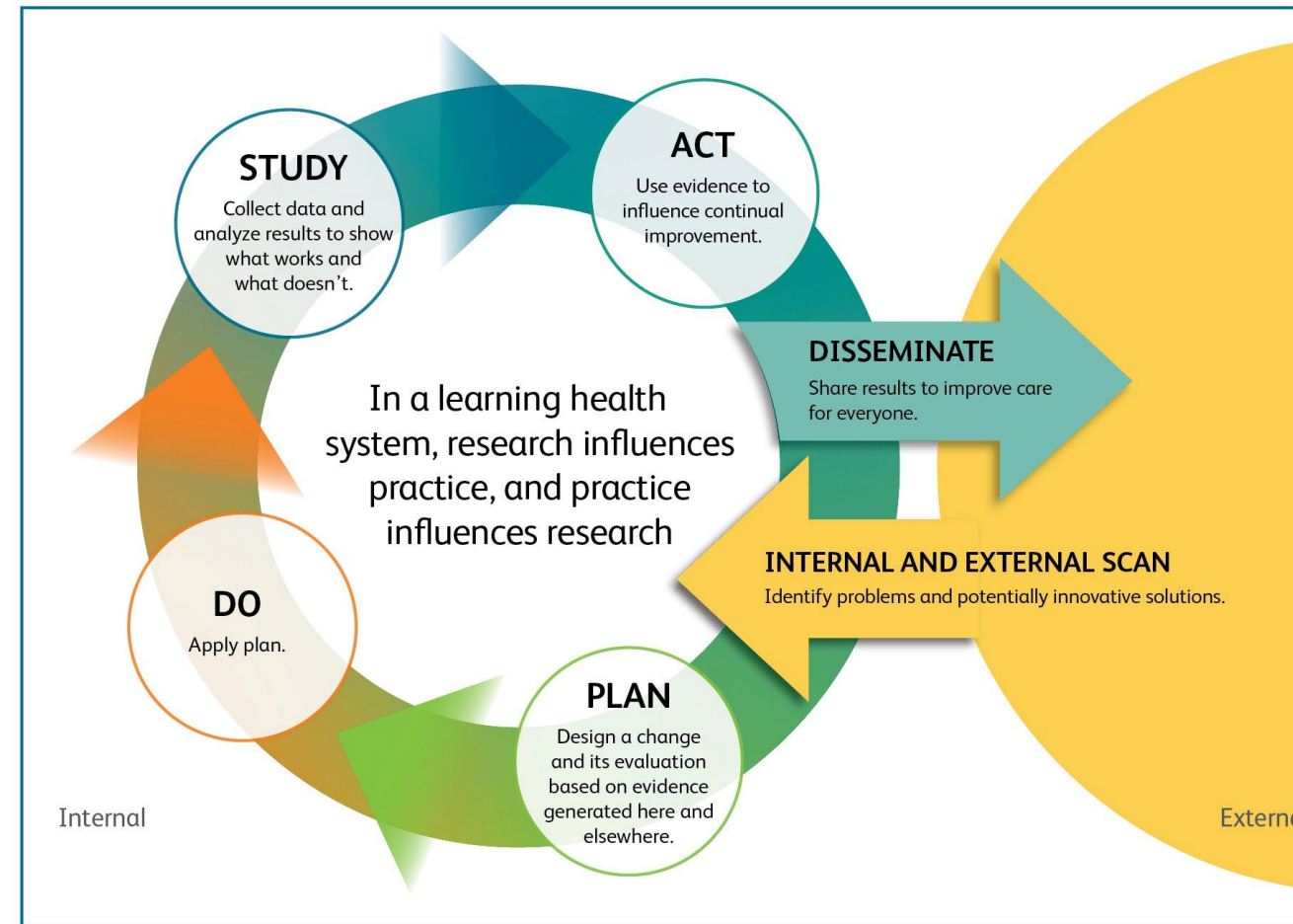
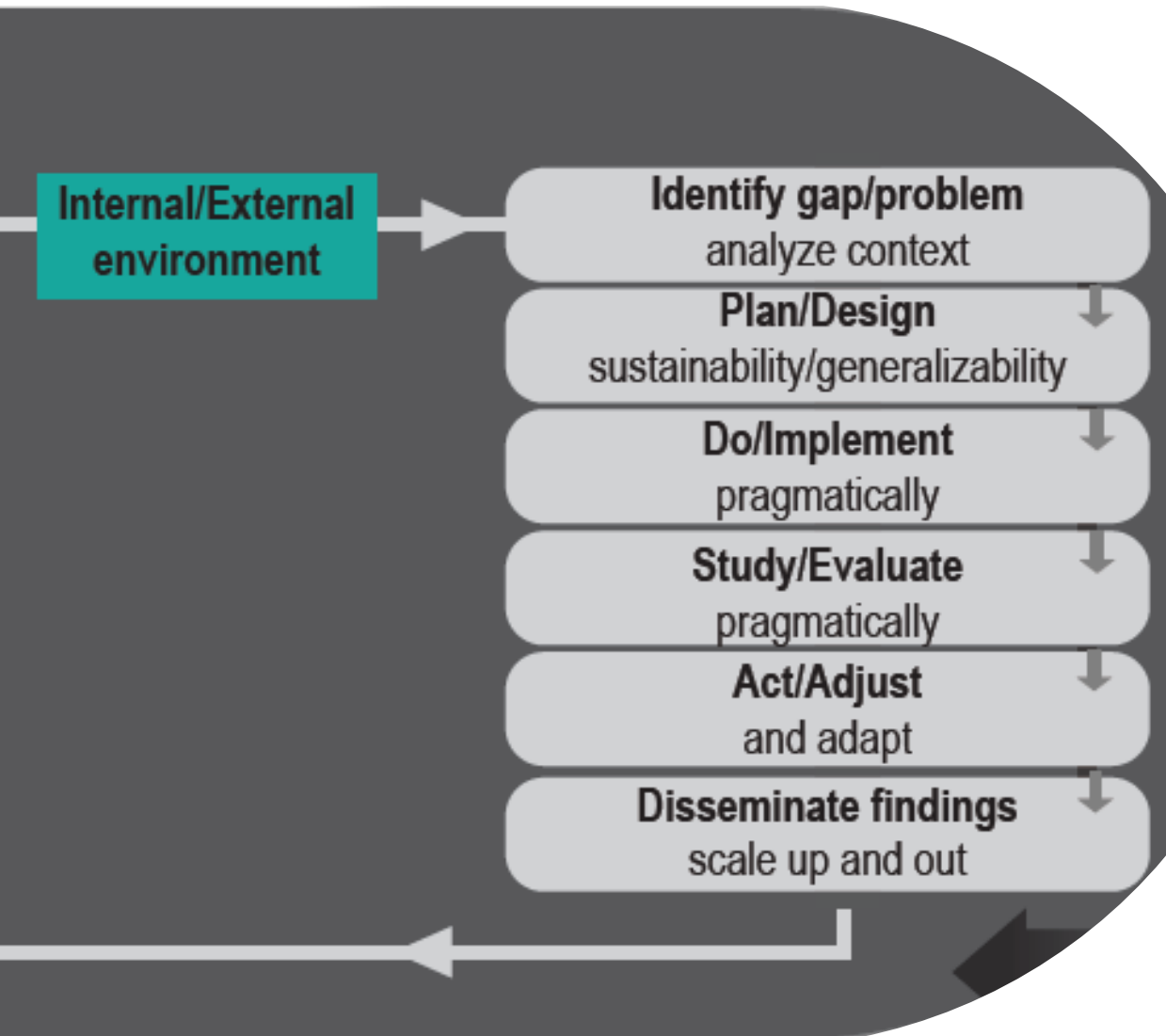
- Iterative
- Rapid

An Aspirational Framework for a Mature LHS



Greene's classic LHS model

An Aspirational Framework for a Mature LHS



'PDSA' concept from quality improvement (*KP Washington*)

An Aspirational Framework for a Mature LHS

Systems Thinking Approach to Complex Problems

HEALTH INSTITUTION UNIT LEVEL
(Individual department / specialty)

ORGANIZATIONAL LEVEL
(Individual health institution)

COMMUNITY LEVEL
(Relationships among health institutions / organizations)

PUBLIC POLICY LEVEL
(National, state and local)

An Aspirational Framework for a Mature LHS

Systems Thinking Approach to Complex Problems

HEALTH INSTITUTION UNIT LEVEL
(Individual department / specialty)

ORGANIZATIONAL LEVEL
(Individual health institution)

COMMUNITY LEVEL
*(Relationships among health
institutions / organizations)*

PUBLIC POLICY LEVEL
(National, state and local)

Engagement/support across all levels of stakeholders

Builds on the socio-ecologic model

An Aspirational Framework for a Mature LHS

ORGANIZATIONAL LEVEL *(Individual health institution)*

- Shared vision: Evidence-based practice and practice-based evidence
- Equity-focused, transdisciplinary stakeholder-engaged team science
- Prioritization of resources and data availability

An Aspirational Framework for a Mature LHS

COMMUNITY LEVEL

(Relationships among health institutions / organizations)

- Multi-sectoral collaborations
- Shared goals and priorities
- Data sharing and standards

An Aspirational Framework for a Mature LHS

PUBLIC POLICY LEVEL *(National, state and local)*

- **Guidance/regulations/quality standards**
- **Reimbursement models (e.g., grant funding, clinical revenue)**
- **Financial support for training/education programs**
- **Few examples of LHS at this level**

An Aspirational Framework for a Mature LHS

Systems Thinking Approach to Complex Problems

HEALTH INSTITUTION UNIT LEVEL
(Individual department / specialty)

ORGANIZATIONAL LEVEL
(Individual health institution)

COMMUNITY LEVEL
(Relationships among health institutions / organizations)

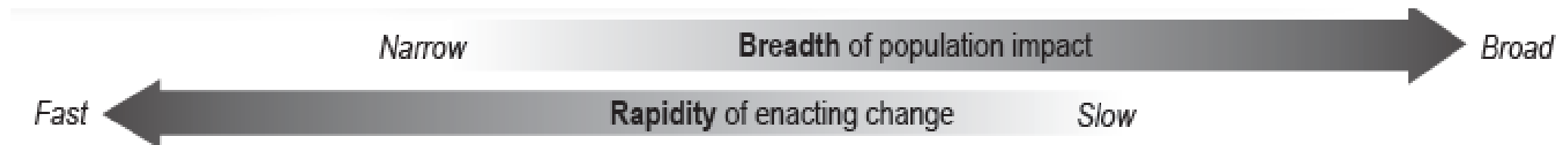
PUBLIC POLICY LEVEL
(National, state and local)

Geisinger, Vanderbilt,
University of Michigan, VA, Kaiser

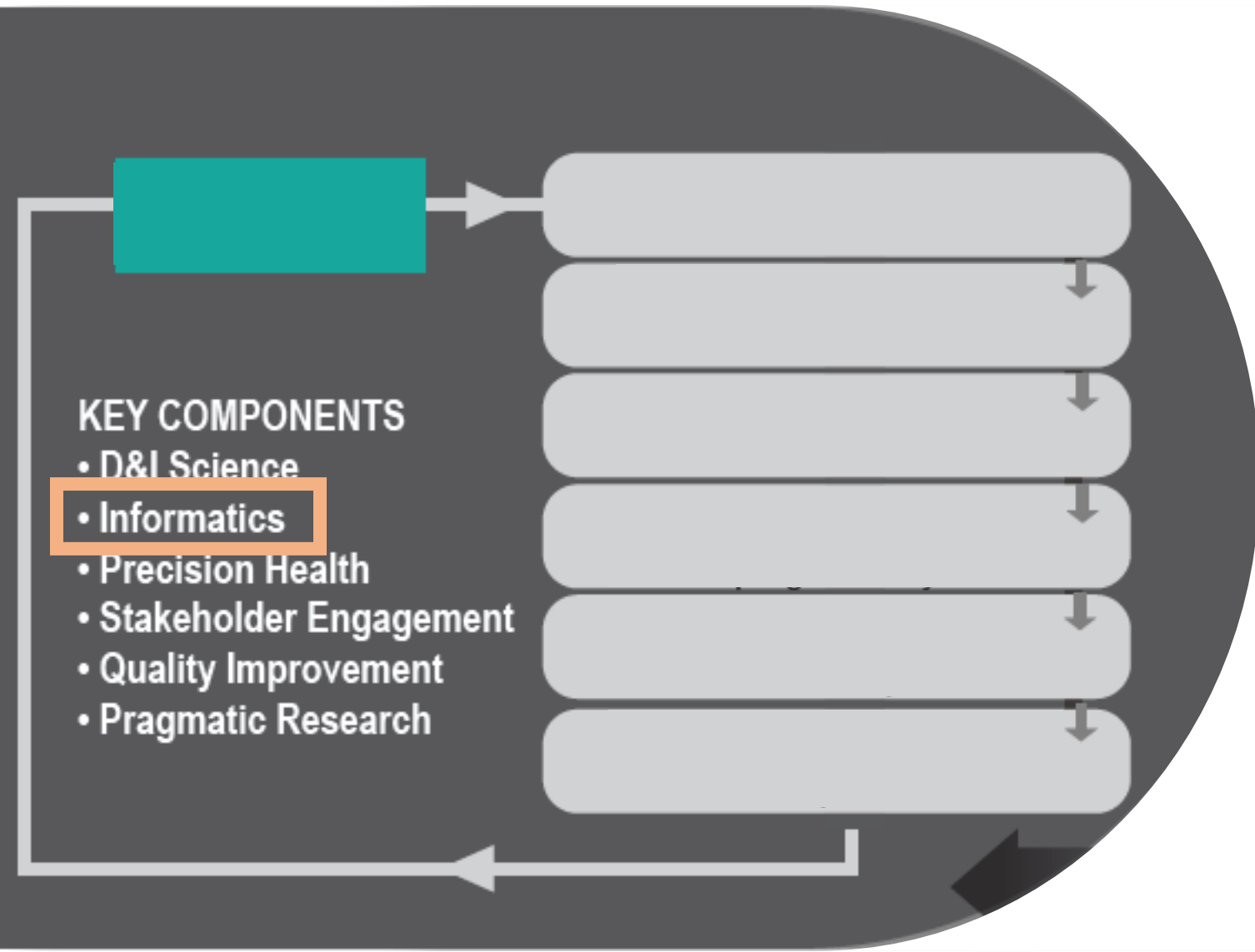
ADAPT

Swiss model
PCORnet

LHS can occur at any of these levels



An Aspirational Framework for a Mature LHS



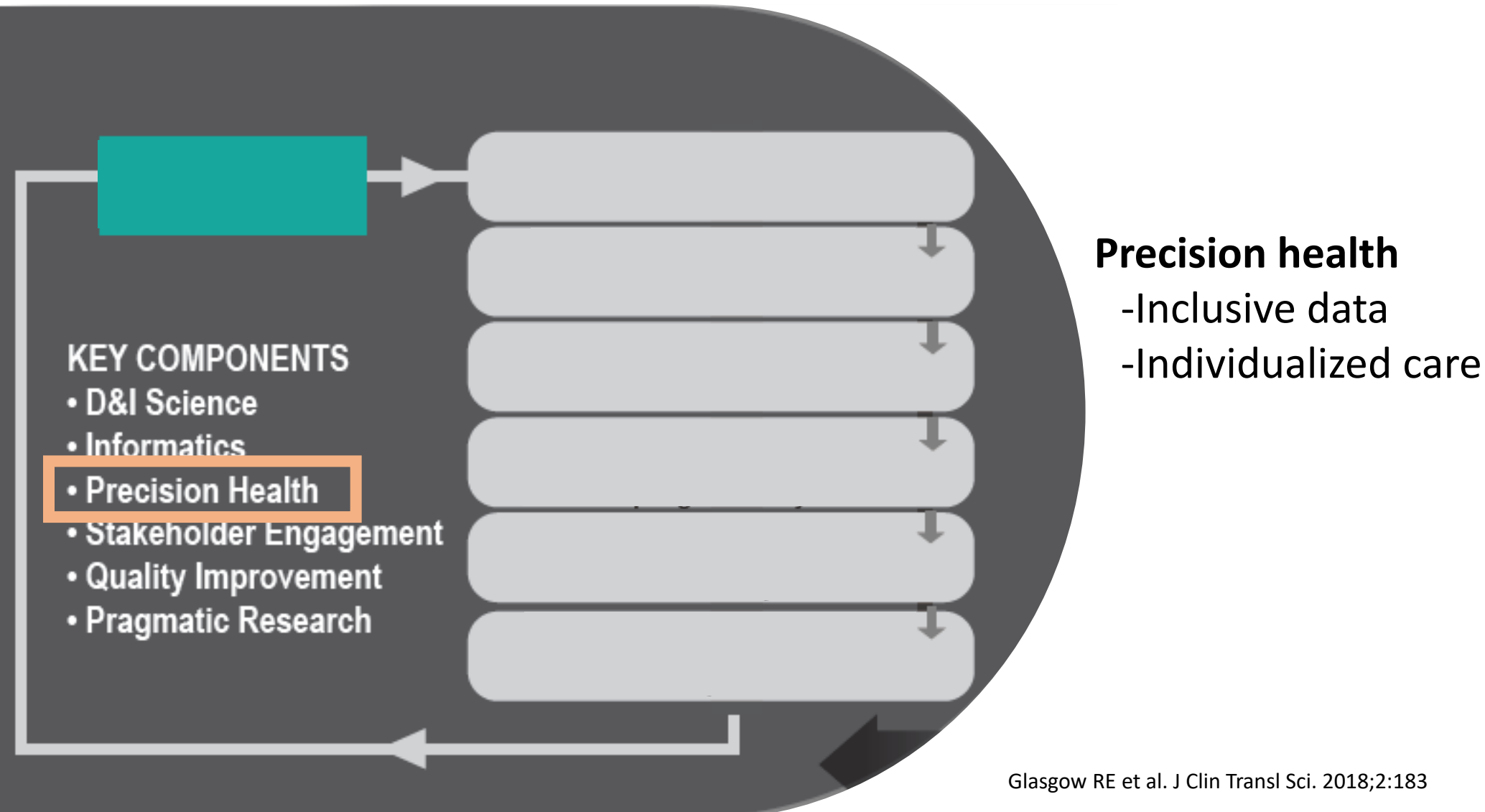
KEY COMPONENTS

- D&I Science
- **Informatics**
- Precision Health
- Stakeholder Engagement
- Quality Improvement
- Pragmatic Research

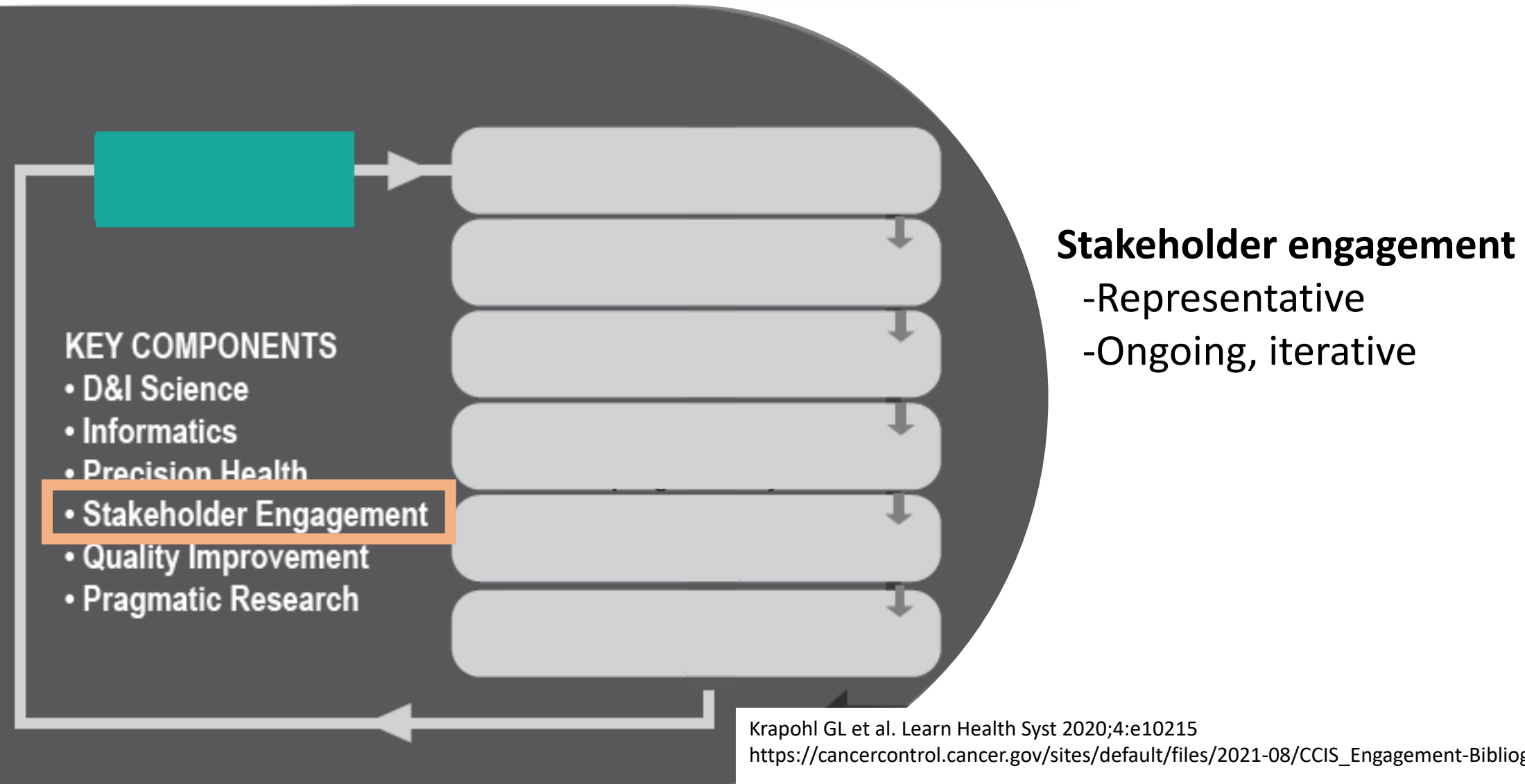
Informatics

- Data, software, technology
- Analytic tools, expertise
- Standards and ontologies

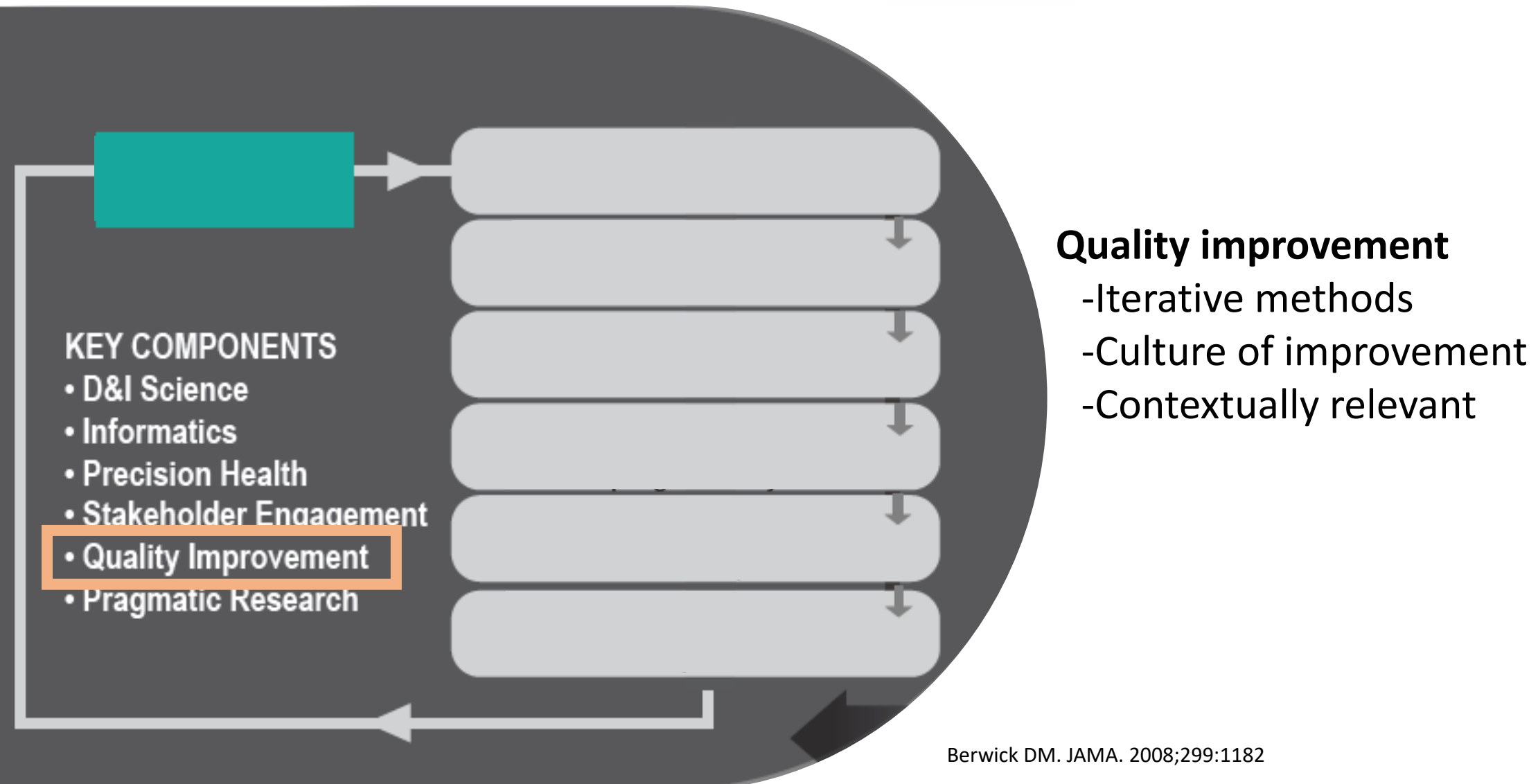
An Aspirational Framework for a Mature LHS



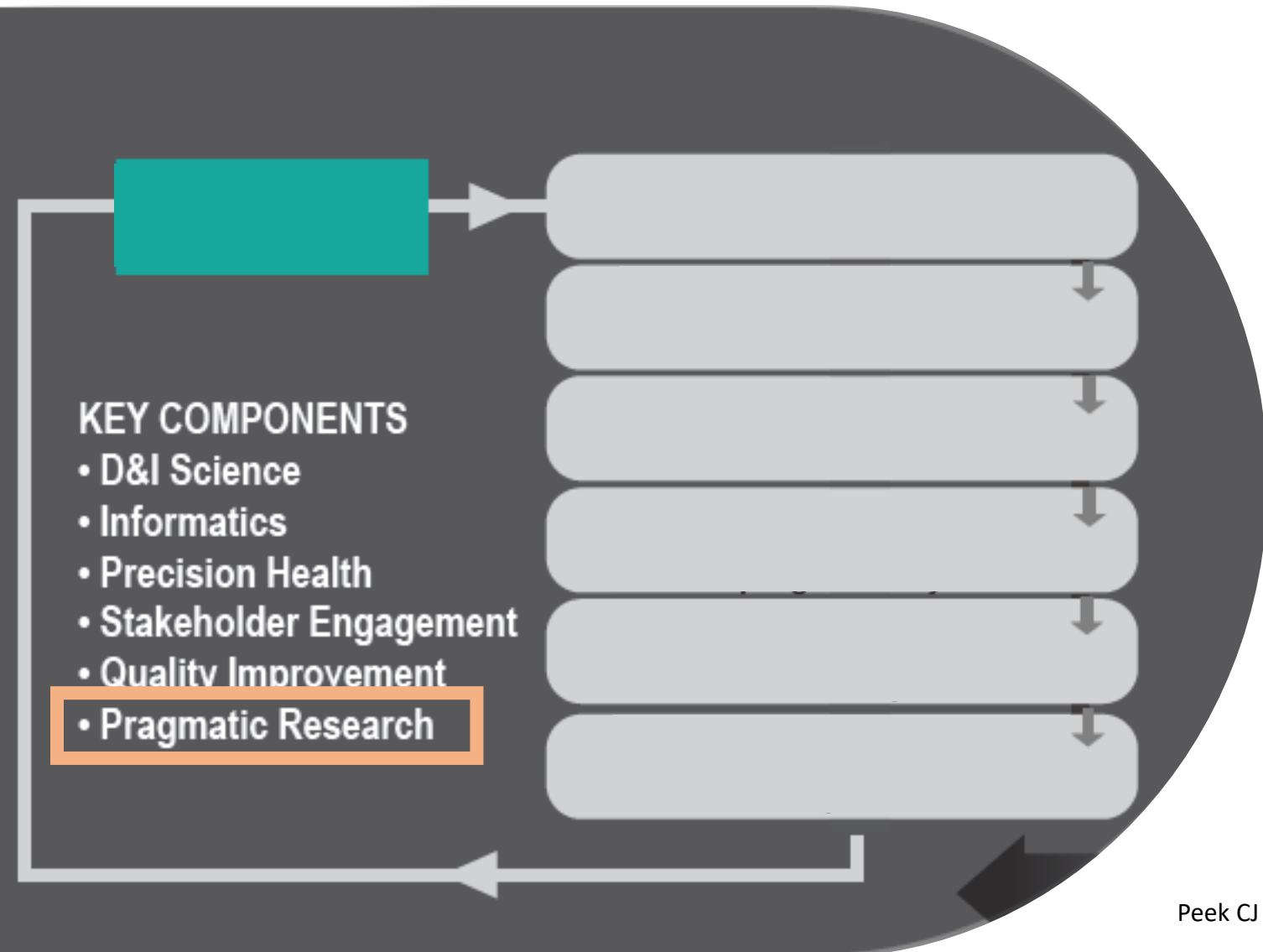
An Aspirational Framework for a Mature LHS



An Aspirational Framework for a Mature LHS



An Aspirational Framework for a Mature LHS



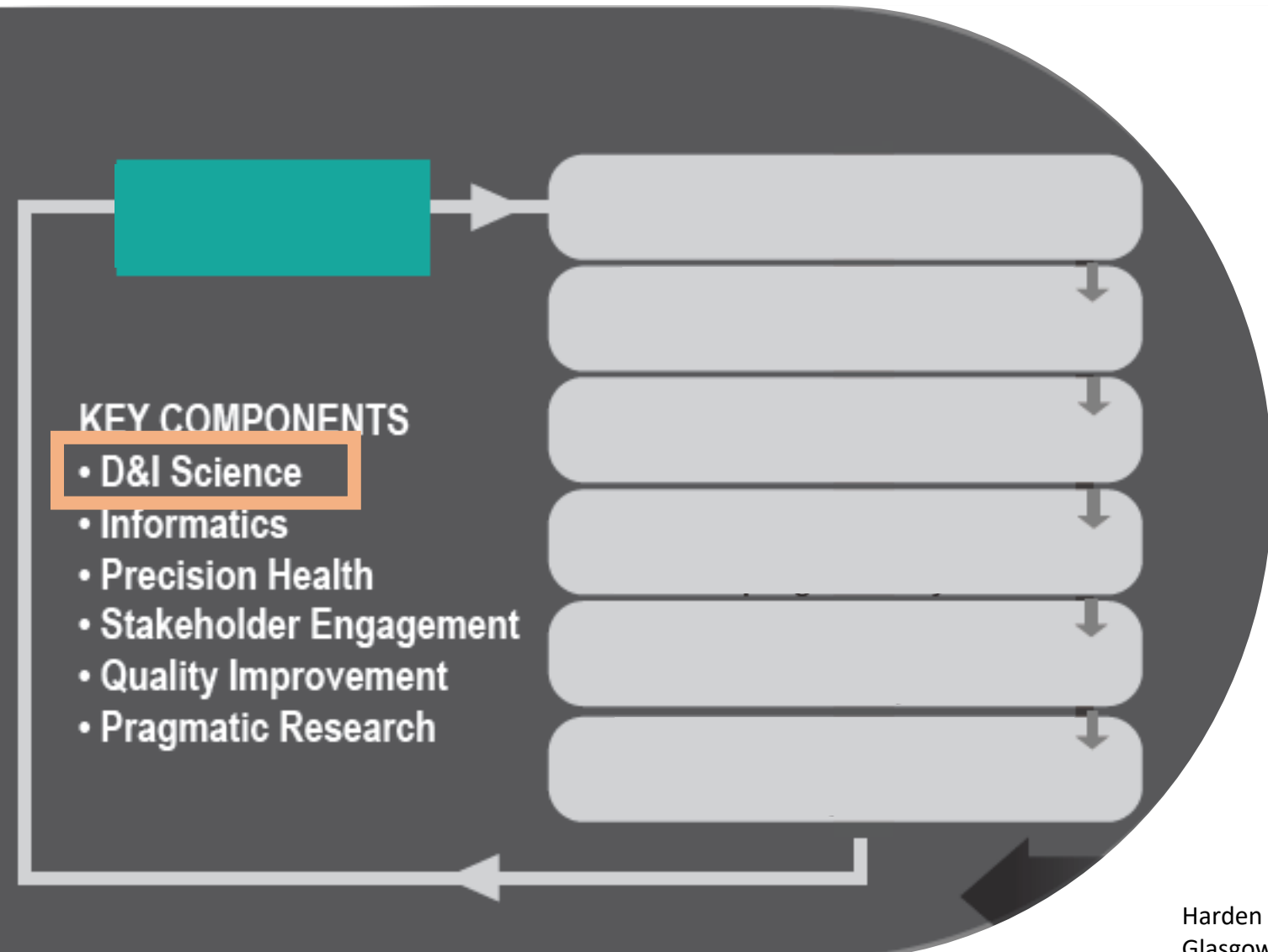
KEY COMPONENTS

- D&I Science
- Informatics
- Precision Health
- Stakeholder Engagement
- Quality Improvement
- Pragmatic Research

Pragmatic research methods/outcomes

- Relevance to stakeholders
- Rapidly and recursiveness of findings
- Replicability by others
- Rigor in real-world
- Resources required

An Aspirational Framework for a Mature LHS



KEY COMPONENTS

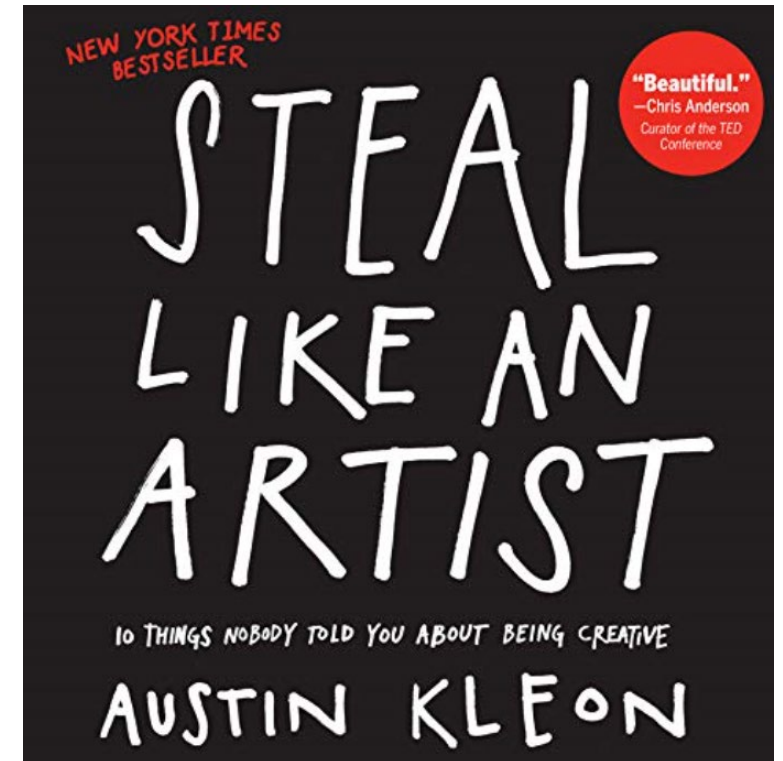
- D&I Science
- Informatics
- Precision Health
- Stakeholder Engagement
- Quality Improvement
- Pragmatic Research

Dissemination & Implementation (D&I) Science

- Translating evidence to practice
- Sustainability, scalability
- Dissemination

The Aspirational Mature LHS Framework

- Integrates others' work/ideas
- D&I science
- Prioritizes under-recognized challenges
 - Sustainability and generalizability
- Emphasizes methods to maximize equity
 - **Inclusive** precision health
 - **Representativeness** of stakeholders



LHS Summary

- An aspirational goal
- Many examples along the maturity spectrum
- Challenges present opportunities
 - Cultural and policy level changes
 - Transdisciplinary engagement
 - Integration of many methods/concepts/perspectives
- Tune in to future seminars to learn more!





Thank You!