

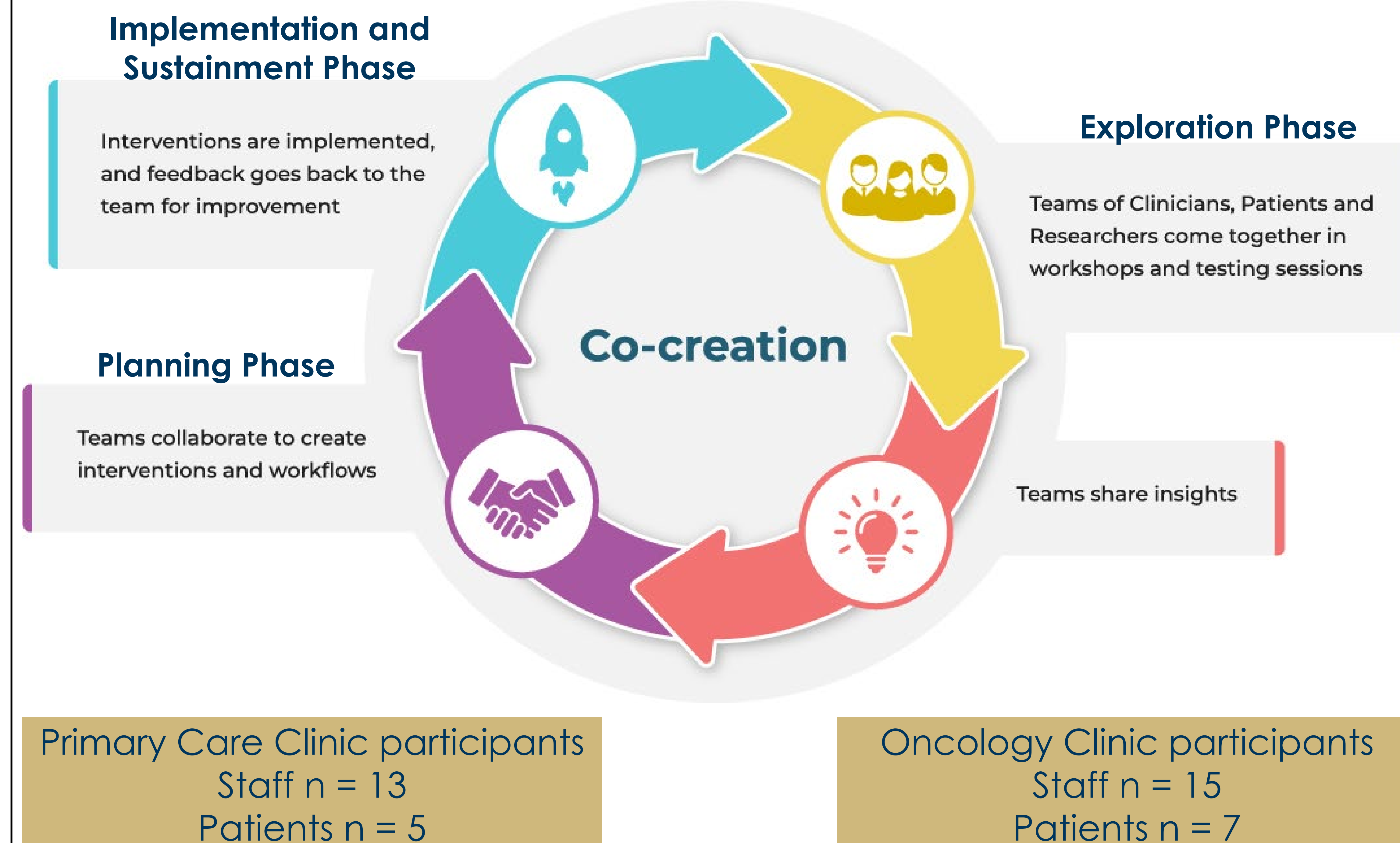
Background

- Co-creation for Health Equity (CO-4 Health Equity) is a participatory engagement method for cancer prevention and control interventions in primary care and oncology clinics
- Engagement with invested partners to:
 - Plan implementation
 - Align workflows and strategies to the local context
 - Ensure the intervention's change mechanism meets local priorities
 - Increase the success of the intervention

Methods

- Included 4 to 5 sessions in which participants:
 - Identified and refined the intervention's core purposes (functions) to ensure alignment with clinic priorities
 - Refined and adapted concrete ways (forms) to meet those functions
- Sessions were conducted via Zoom and lasted 45-90 minutes
- The method can be utilized throughout the research phases

Results



Participants included: clinicians, nurses, care managers, medical assistants, operations leaders, and electronic medical record informaticists

Sessions focused on:

- 1) Exploration Phase
 - Refining the core purposes (functions) of each tool (e.g., identifying patients' priority cancer risk factors)
 - Adapting the workflows and strategies (forms) for intervention delivery
- 2) Planning Phase
 - User testing of tool prototypes
 - Consensus-building on options for clinic workflows

The research team developed matrices to track actions taken, partially taken, or planned for in response to partner recommendations.

Conclusions

- CO-4 Health Equity
 - Leveraged input from invested primary care and oncology partners
 - Refined and adapted workflows and implementation strategies for two cancer prevention and control tools
- Future directions
 - Apply this participatory approach in other clinical innovations
 - Evaluation outcomes

Implications

- Participatory engagement methods inform the design, implementation, and evaluation of multilevel (complex) interventions
- This project offers guidance to researchers to balance input from patients and clinical partners – key partners for cancer prevention and treatment efforts
- Across study phases, Co-4 Health Equity guides partners to create, refine, and adapt an intervention and the clinic workflows needed for its delivery

Cocreation Webpage

