



University of Colorado  
Anschutz Medical Campus

# DISSEMINATION & IMPLEMENTATION SCIENCE GRADUATE CERTIFICATE

<https://medschool.cuanschutz.edu/accords/DICert>





# CERTIFICATE DIRECTORS & SPONSORS



**ACCORDS**

ADULT AND CHILD CENTER FOR OUTCOMES  
RESEARCH AND DELIVERY SCIENCE

UNIVERSITY OF COLORADO  
CHILDREN'S HOSPITAL COLORADO



**Tina Studts, PhD,  
MSW, MSPH**  
Director



**Borsika Rabin, PhD,  
MPH, PharmD**  
Co-Director



**Jordan Crawford,  
MPH, CHES**  
Program Coordinator



Colorado Clinical and Translational  
Sciences Institute (CCTSI)

UNIVERSITY OF COLORADO DENVER | ANSCHUTZ MEDICAL CAMPUS

**Clinical Sciences Graduate Program**



**Lisa Cicutto, PhD,  
ACNP(cert), RN**  
Director, Clinical Sciences  
Graduate School Program



**Galit Mankin, MSW**  
Administrative Lead, CLSC

# D&I CERTIFICATE FACULTY



**Russ Glasgow, PhD**



**Mónica Pérez Jolles, PhD**



**Bethany Kwan, PhD**



**Anna Maw, MD**



**Katy Trinkley, PharmD, PhD**



**Meredith Fort, PhD**

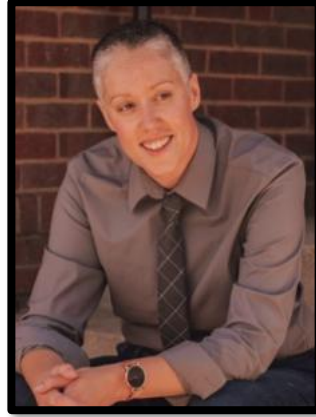


**Amy Huebschmann, MD, MS,  
FACP (Past Certificate Director)**

# D&I CERTIFICATE FACULTY



**Jodi Holtrop, PhD, MCHES**



**Lindsay Lennox, MA**



**Cathleen Willging, PhD**



**Nikki Wagner, PhD**



**Ross Brownson, PhD**



**Alison Hamilton, PhD, MPH**

# PRESENTATION OVERVIEW

## **What, Who, Why, Where, When, How?**

- ▶ What is dissemination & implementation (D&I) science?
- ▶ Who should pursue the D&I science certificate?
- ▶ Why pursue the D&I science graduate certificate?
- ▶ Where are certificate courses held?
- ▶ When should I apply?
- ▶ How do I apply?

# WHAT

# WHAT IS DISSEMINATION & IMPLEMENTATION (D&I) SCIENCE?

## Definitions

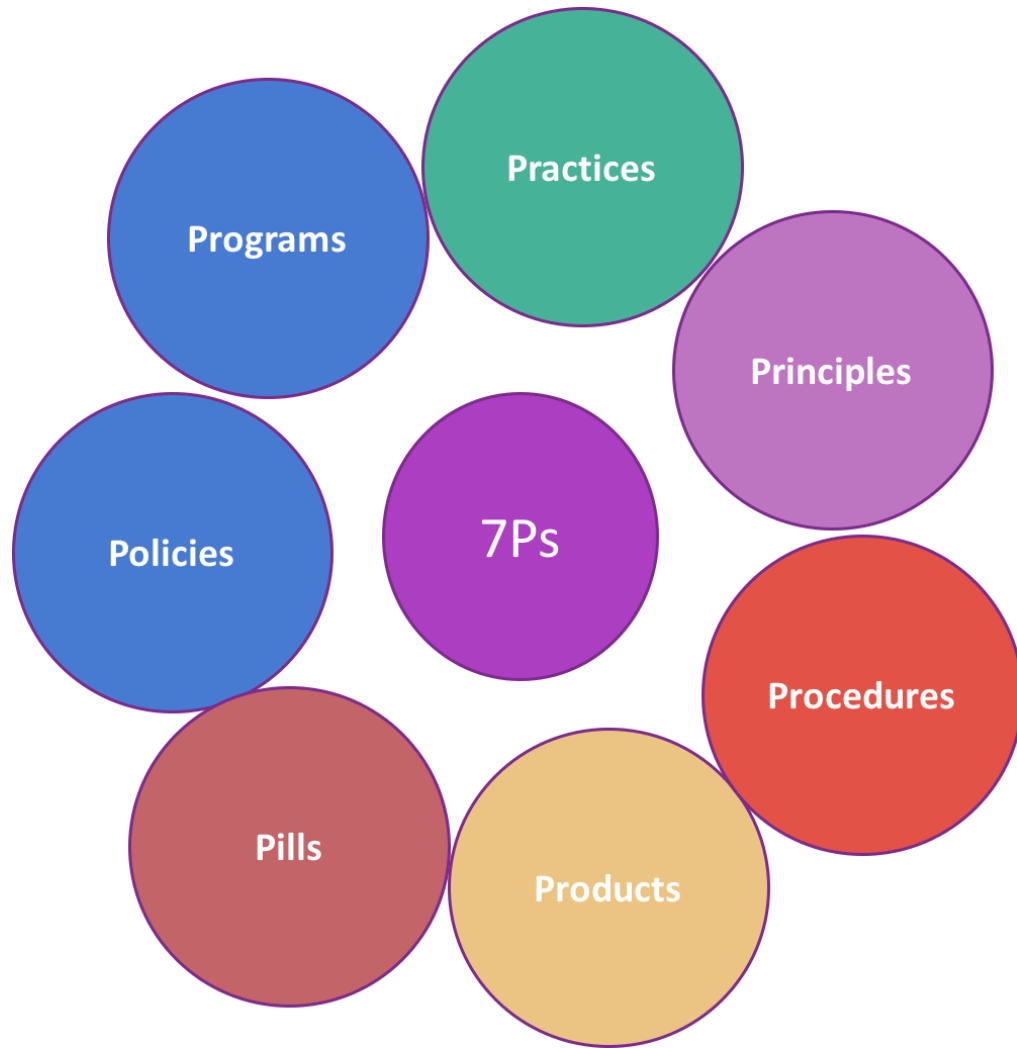
- ▶ Dissemination research: Scientific study of targeted distribution of information and intervention materials to a specific public health or clinical practice audience. (*How best to package, communicate about, and deliver evidence-based interventions?*)
- ▶ Implementation Research: Scientific study of the use of strategies to adopt and integrate evidence-based health interventions into clinical and community settings to improve individual outcomes and benefit population health. (*How best to support the uptake, integration, and sustained use of evidence-based interventions?*)

See: PAR-25-144 – Dissemination and Implementation Research in Health



# OVERVIEW

## WHAT IS DISSEMINATION & IMPLEMENTATION (D&I) SCIENCE?



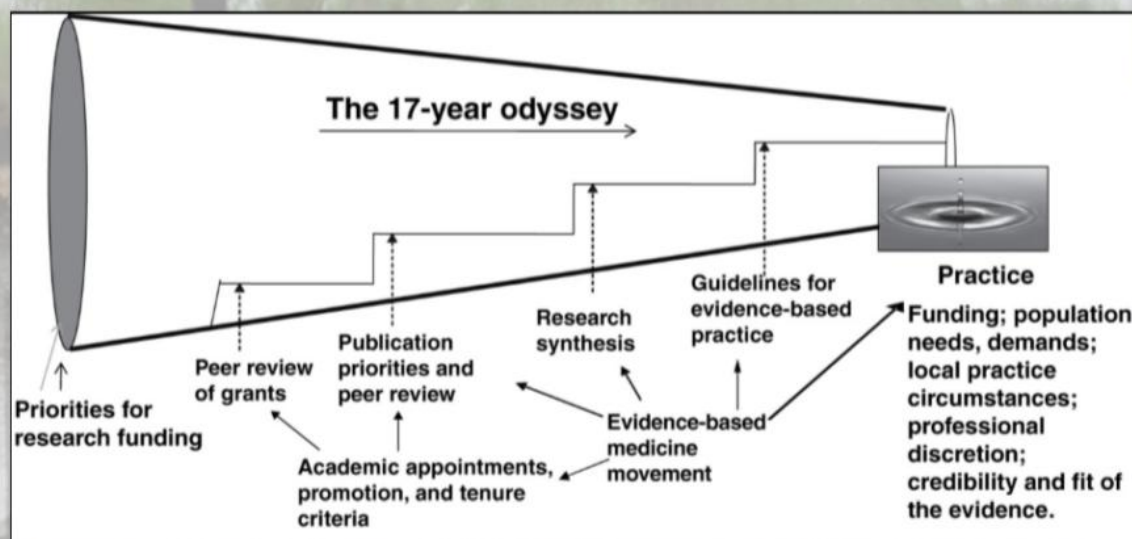
### What can be an intervention?

Brown, H., Curran, G., Palinkas, L.A., Aarons, G.A. et al. (2017). An Overview of Research and Evaluation Designs for Dissemination and Implementation. *Annual Review of Public Health* 38;1-22.

# WHAT

# WHAT IS DISSEMINATION & IMPLEMENTATION (D&I) SCIENCE?

## Research to Practice Pipeline



## With Traditional D&I Approach

14%, 17 years

But there is hope. . .

## With Active D&I Approach

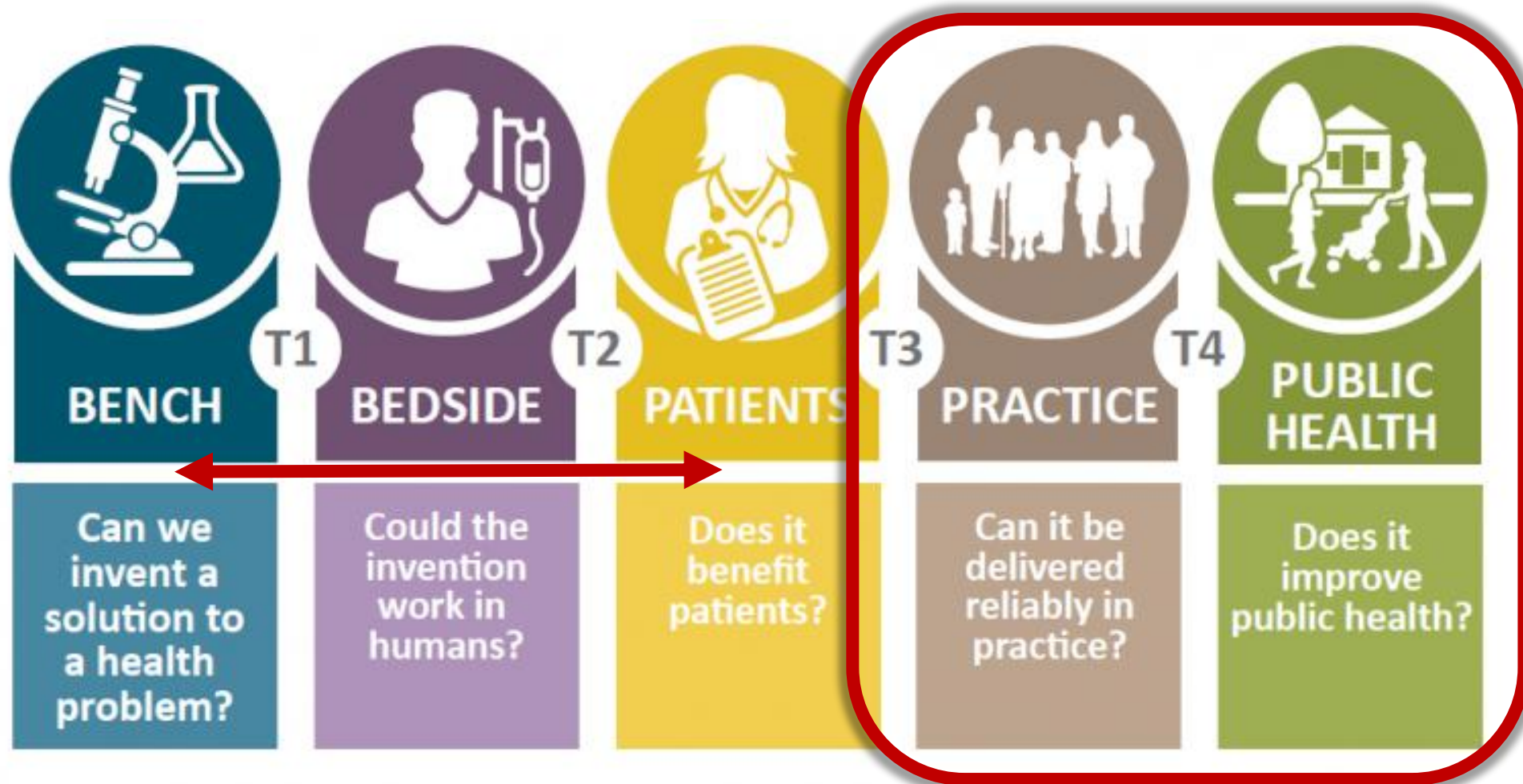
May be able to achieve up to 80%, 3 years

Balas & Boren, 2000; Green, 2008, Fixsen, Blasé, Timbers & Wolf, 2001, Saldana & Chamberlain, 2012



# WHAT

## WHAT IS DISSEMINATION & IMPLEMENTATION (D&I) SCIENCE?



# WHAT

# WHAT IS THE RATIONALE FOR OUR D&I GRADUATE CERTIFICATE?

## Rationale

- ▶ Addresses a local and national need for rigorous training in D&I Science in health services and public health research
- ▶ Leverages the outstanding D&I faculty and resources on our campus, and our connections with other national D&I leaders as guest lecturers

# WHAT

# WHAT IS THE EDUCATIONAL PHILOSOPHY?

## Educational Philosophy

- ▶ Tailor materials and assignments to each student's current D&I experience level, professional background, and future goals
- ▶ Personal attention is important to ensure individual attainment of D&I competencies
  - Small class sizes: typically 10-18 students and 2 instructors
- ▶ Balance theoretical and applied learning
  - Provide opportunities for students to apply the course theoretical/didactic content to advance a specific research goal in their settings of interest



# WHAT

# WHAT WILL I LEARN?

## **Selected D&I competencies\* are addressed, including:**

- ▶ Develop a rationale for why/how to select a D&I framework
- ▶ Design pragmatic interventions and evaluations
- ▶ Select appropriate process/outcome measures
- ▶ Balance the need for adaptations with fidelity
- ▶ Use of mixed methods for evaluation in D&I studies
- ▶ Engage key stakeholders throughout the process

\*Padek et al., *Implementation Science*, 2015; Tabak et al., *American Journal of Preventive Medicine*, 2017; Huebschmann et al., 2022

# WHAT

## WHAT ARE THE COURSES?

Total of 12 credit hours completed within a 2-3 year period

### ► Required Courses (8 credit hours)

Required Courses	Credits	Timing
<b>CLSC 7653</b> Introduction to Dissemination and Implementation Research in Health	3	Fall
<b>CLSC 6560</b> Designs and Mixed Methods in Implementation Research	3	Spring
<b>CLSC 6750</b> Designing for Dissemination, Sustainability, and Equity	2	Fall

# WHAT

## WHAT ARE THE COURSES?

### ► Elective Courses (4 credit hours)

Elective Courses	Credits	Timing
<b>CLSC 7663</b> Context and Adaptation in Dissemination and Implementation Research	2	Spring
<b>CLSC 6770</b> Grant-writing for D&I Research	2	Summer
<b>CLSC 6850</b> Advanced Research Topics in Dissemination & Implementation Science	1	Fall
Electives approved by Certificate director	Up to 3	Varies



# WHAT

## WHAT ARE THE COURSES?

### ► ***Introduction to Dissemination and Implementation Research in Health*** **(CLSC 7653 – Rabin & Studts)**

- 3 credit hours
- Overview of key D&I models, methods, and measures
- Supports students to develop D&I grant or Quality Improvement (QI) project proposal over the semester
- Nationally known guest speakers discuss their work with the class
- Ideas that students develop in this initial course may be further developed in additional later courses (see next slide)

# WHAT

## WHAT ARE THE COURSES?

- ▶ ***Designs and Mixed Methods in Implementation Research***  
**(CLSC 6560 – Holtrop, Hamilton, Fort, Studts, Willging)**
  - 3 credit hours
  - In-depth examination of study designs
  - Qualitative, quantitative, and mixed-methods approaches
  - Complete a D&I methods section for a research proposal

# WHAT

## WHAT ARE THE COURSES?

- ▶ ***Designing for Dissemination, Sustainability, and Equity***  
**(CLSC 6750 – Kwan & Lennox)**
  - 2 credit hours
  - Learn about design-thinking processes and diagnosing situational context
  - Engagement with partners for co-design
  - Planning for equitable implementation and sustainment from the start



# WHAT

## WHAT ARE THE COURSES?

- ▶ ***Context and Adaptation in Dissemination & Implementation Research***  
**(CLSC 7663 – Studts & Rabin)**
  - 2 credit hours
  - Learn to assess, guide, and balance adaptations with fidelity
  - Develop understanding and skills for assessing multi-level and dynamic contextual issues in D&I research
  - Recognize the role of D&I science in advancing health equity

# WHAT

## WHAT ARE THE COURSES?

- ▶ ***Grant-writing for Dissemination & Implementation Science***  
**(CLSC 6770 – Glasgow, Brownson, Studts, Maw, Holtrop)**
  - 2 credit hours
  - Intensive focus on sections of D&I grant applications
  - Emphasis on grant-writing strategies for D&I in particular
  - Students draft/revise grant sections and receive feedback
  - Culminates in a mock study section

# WHAT

## WHAT ARE THE COURSES?

- ▶ ***Advanced Research Topics in D&I Science***  
**(CLSC 6850 –Trinkley, Wagner, Huebschmann)**
  - 1 credit hour
  - Journal club discussions – presenting critiques of recent D&I publications followed by group discussion with our ACCORDS D&I team (includes Certificate faculty and many others)
  - Research presentations – deliver an oral research presentation to a small group of D&I faculty
  - Provide peer critiques



## Target Audience

- ▶ Researchers interested in conducting T3-T4 translational research with a focus on the dissemination and implementation of evidence-based programs
- ▶ Professionals in health services, community health, and public health research

 WHO

# WHAT FIELDS HAVE STUDENTS COME FROM?

<https://medschool.cuanschutz.edu/accords/ACCORDS-cores/dissemination-implementation-core/d-i-certificate-program#ac-current-students-5>

A few examples:

Psychology, pediatrics, internal medicine, surgery, social work, public health, physical therapy, oncology, gastroenterology, maternal fetal medicine, community and behavioral health, psychiatry, ophthalmology, neurology, genomic health, emergency medicine, behavioral science, and many more

# WHY

# WHY PURSUE THE D&I SCIENCE GRADUATE CERTIFICATE?

## Rationale for individuals in different career stages

- ▶ K-awardees: Robust coursework for a D&I training goal on a career development award
- ▶ Mid-career or senior faculty: Become a “home-grown” local faculty expert for D&I research methods in your institution
- ▶ PhD/DrPH students: potential area of minor concentration research methods
- ▶ Exploring areas for a PhD: test out the field of D&I science before committing to research in this area

# WHERE

# WHERE ARE CERTIFICATE COURSES HELD?

## **Format**

- ▶ All courses are fully available online (Zoom® videoconference platform) and meet “live” – our current students participate remotely from locations across the USA and Canada

## **Academic Home**

- ▶ Collaboration with Clinical Science Graduate Program, part of the Colorado Clinical and Sciences Institute (CCTSI)
- ▶ Courses can be applied to graduate degrees at CU (MSCS, PhD)

# HOW

## HOW DO I APPLY?

<https://medschool.cuanschutz.edu/accords/cores-and-programs/dissemination-implementation-science-program/d-i-certificate-program#Cert-Admissions>

### Admissions



#### Admission Requirements

Degree: BA/BS

GPA: A minimum of 3.00 is recommended

Prerequisite courses: N/A



#### Required Application Documents



#### International Applicant Criteria

↑ Top

There is one application cycle per year with a start date in the **Fall** (August) semester. **The application cycle opens each year from January 15 – February 15.**



# HOW

## HOW DO I APPLY?



Admission Requirements



Required Application Documents



International Applicant Criteria

- ▶ Degree: BA/BS minimum
- ▶ GPA: A minimum of 3.00 recommended
- ▶ There are no prerequisite courses for admission into the program

# HOW

## HOW DO I APPLY?



Admission Requirements



Required Application Documents



International Applicant Criteria

- ▶ Online Graduate School application (CU Anschutz)
- ▶ Statements of interest (250 word limit each):
  - What makes you interested in specialized training in D&I Science?
  - What do you hope to gain professionally from the Certificate program?
- ▶ Curriculum Vitae or Resume
- ▶ Transcripts from highest completed degree (MD applicants must include undergraduate degree transcript)
- ▶ Statement of how program will fit into current responsibilities (with optional letter of support)
- ▶ Application fee (\$50 for domestic applicants)

# HOW

## HOW DO I APPLY?



Admission Requirements



Required Application Documents



International Applicant Criteria

- ▶ In addition to the general admission requirements, international applicants must meet additional requirements dictated by the University: [International Student Requirements for Graduate School admissions](#).
- ▶ **Transcripts from foreign (non-US) institutions:** Applicants must order Course by Course transcript evaluation from either Educational Credential Evaluators, Inc. ([ECE](#)) or World Education Services ([WES](#)). ECE evaluation reports can be uploaded to the University portal automatically by ECE. WES evaluations should be forwarded directly to the University.
- ▶ Application fee \$75 for international applications

# HOW

## HOW DO I APPLY?

- ▶ See [our website](#) for more information on the application and admissions process
- ▶ Link to application: <https://graduateschool.cuanschutz.edu/admissions/apply>
- ▶ To begin a new application:
  - 1) Select “CU Anschutz Non-Degree Information” under “Non-Degree Graduate Studies (Courses and Certificates)”
  - 2) When prompted for your academic interests, select “Certificate”
  - 3) Select the Dissemination and Implementation (D&I) Science graduate certificate program (this option will not be listed or available outside of the January 15 – February 15 application window)
- ▶ Between January 15 and February 15, if you have questions about accessing the correct application form, please contact [Galit.Mankin@cuanschutz.edu](mailto:Galit.Mankin@cuanschutz.edu) for assistance.

# HOW

# HOW MUCH DOES IT COST?

- ▶ Information on tuition costs (<https://www.cuanschutz.edu/student-finances/tuition-fees/graduate-school-2024-2025>)
  - Same tuition as the **Clinical Science (MS or PhD) Program**
    - ▶ 2025-2026 Colorado Resident = \$597/credit hour
    - ▶ 2025-2026 Non-resident = \$1,451/credit hour
- ▶ Reminder: 12 credit hours total to complete the Certificate, may be completed over 2-3 years.
- ▶ University of Colorado faculty members may use Tuition Assistance for courses if they are an eligible employee.





# WHEN

# WHEN TO APPLY?

## **Fall 2026 Certificate Cohort:**

- ▶ Application available January 15, 2026 (link provided on our website)
- ▶ Applications close on February 15, 2026
- ▶ Application reviews should be complete in April 2026 and all applicants will be notified via email of their status
- ▶ The Graduate School will contact accepted students regarding institutional requirements for immunization and background checks
- ▶ Courses begin in late August 2026

# ACKNOWLEDGEMENTS

It takes a village! Thank you!

## Primary sponsor: ACCORDS

- ▶ ACCORDS Director/Administration
  - Jerica Berge, PhD, MPH, LMFT, CFLE
- ▶ ACCORDS D&I Certificate Faculty
- ▶ D&I Certificate program administrator
  - Jordan Crawford, MPH



ACCORDS

ADULT AND CHILD CENTER FOR OUTCOMES  
RESEARCH AND DELIVERY SCIENCE

UNIVERSITY OF COLORADO  
CHILDREN'S HOSPITAL COLORADO

## Secondary sponsor: CCTSI

- ▶ CCTSI Clinical Sciences Graduate Program
  - Lisa Cicutto, PhD, APN, RN
  - Galit Mankin, MSW
  - Amanda Whiting
- ▶ University of Colorado Graduate School



Colorado Clinical and Translational  
Sciences Institute (CCTSI)

UNIVERSITY OF COLORADO DENVER | ANSCHUTZ MEDICAL CAMPUS

# CONTACT US

General Program questions: [Christina.Studts@cuanschutz.edu](mailto:Christina.Studts@cuanschutz.edu)

Application-specific questions: [Galit.Mankin@cuanschutz.edu](mailto:Galit.Mankin@cuanschutz.edu)

